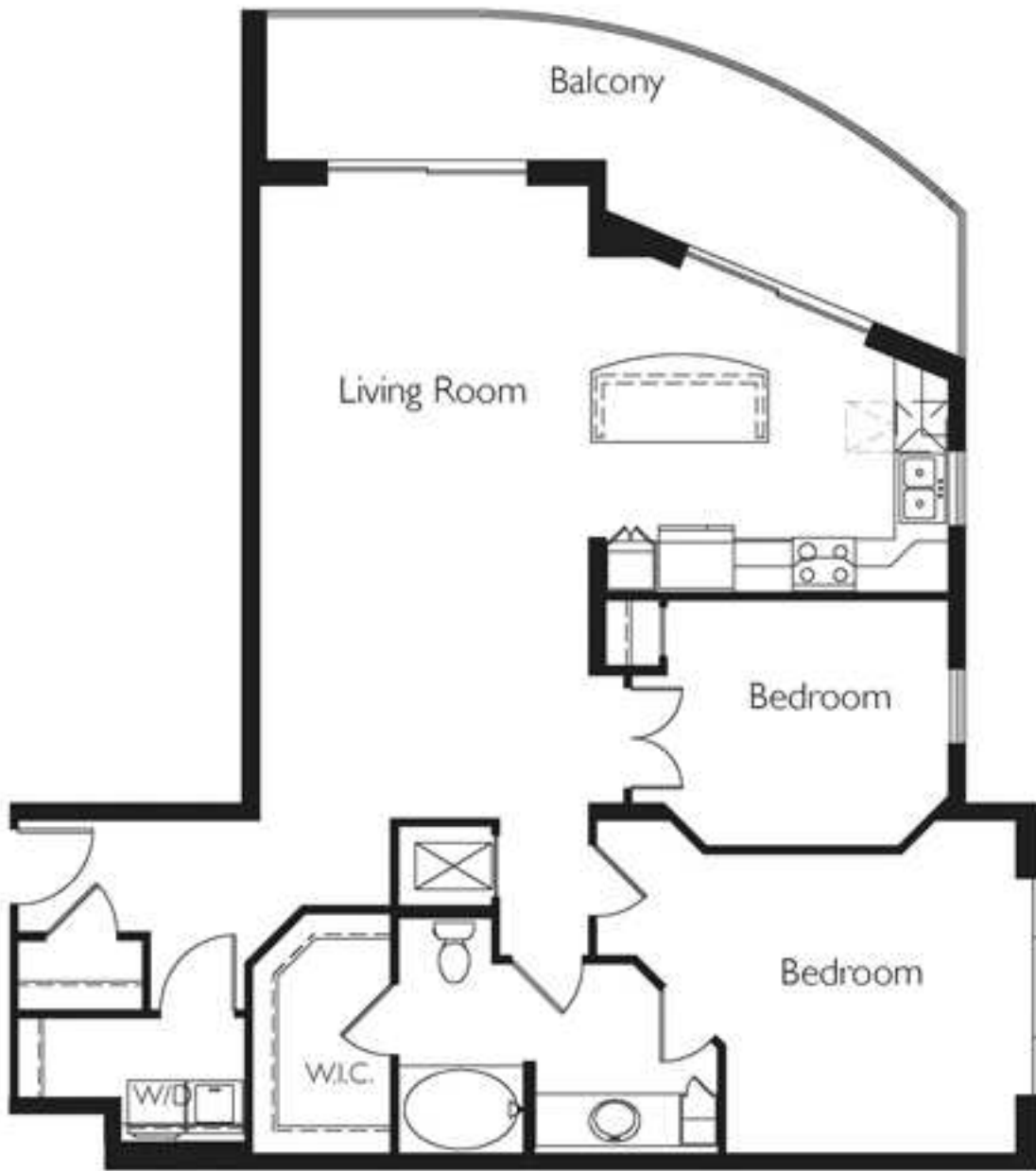


CallKatia.com 305-216-5731

Residences 306-806, 308-808 model "A8"



A/C Area = 1,251 sf
Balcony Area = 191 sf
Total Area = 1,442 sf



Developed By:

 **Fifield Companies**



The plans depicted in the brochure are illustrative layouts and areas are subject to change without notice at the discretion of the developer and architect.

Oral representations cannot be relied upon as correctly stating the representations of the developer. For complete representations, reference should be made to the documents prepared by section 718.302, Florida Statute, to be furnished by a developer to a buyer or lessee.